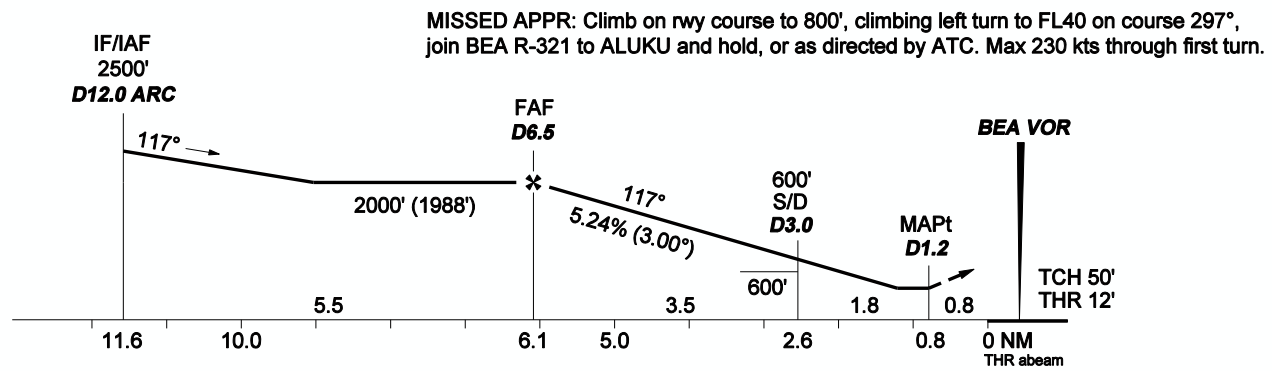
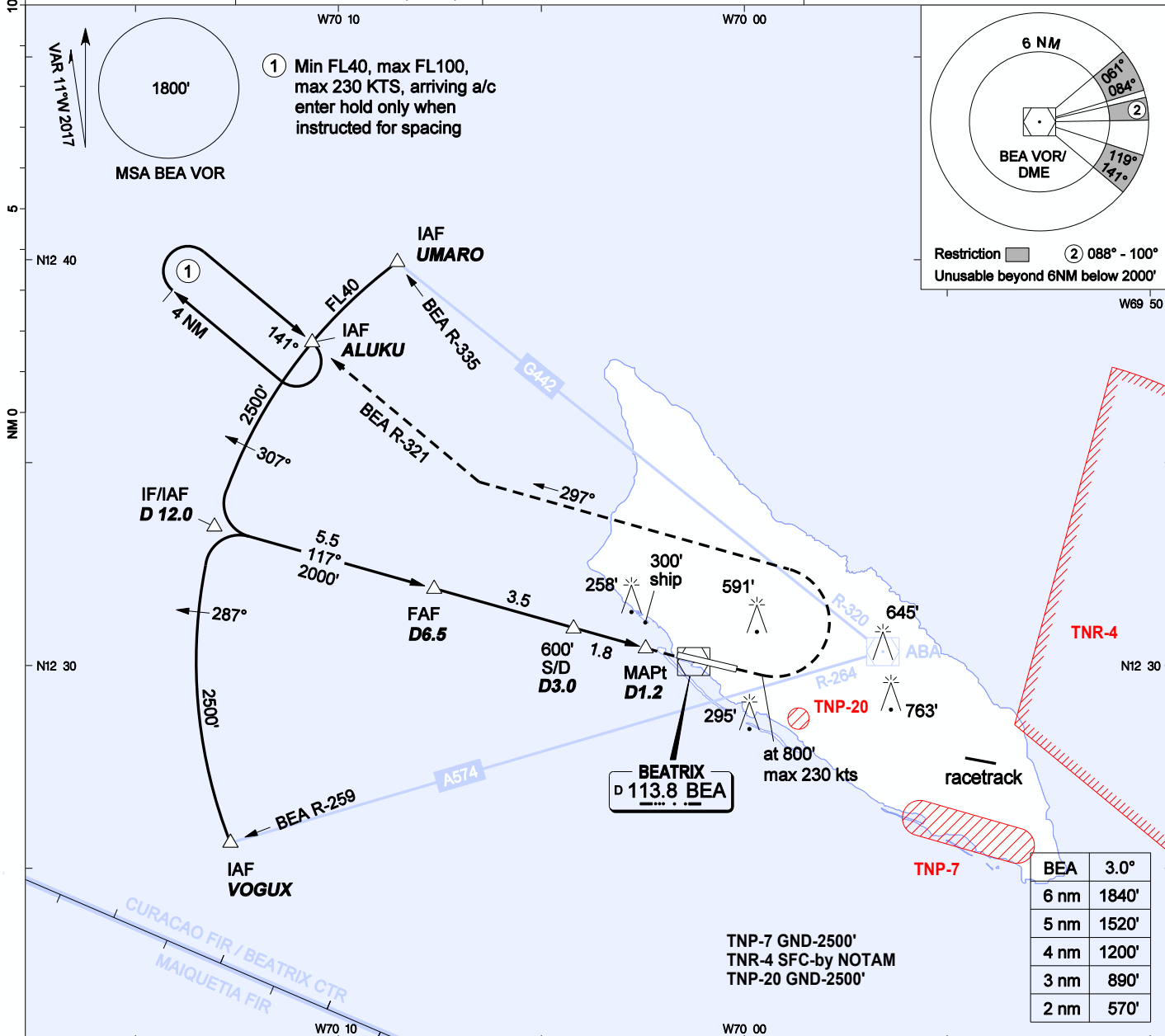


AIP DUTCH CARIBBEAN

INSTRUMENT APPROACH CHART - ICAO	AD ELEVATION: 62' TRANS LEVEL: FL 40 TRANS ALT: 2500' (2438')	BEATRIX: APP 120.9 TWR 118.0 APRON 121.6 ATIS 132.1	VOR RWY 11 REINA BEATRIX INT'L (TNCA) ARUBA
----------------------------------	---	---	---



OCA(H)	A	B	C	D	GROUND SPEED - DESCENT RATE						
STRAIGHT-IN	550' (538')	550' (538')	550' (538')	550' (538')	KNOTS	70	90	100	120	140	160
CIRCLING	890' (828')	890' (828')	1160' (1098')	1160' (1098')	FT/MIN	372	478	531	637	743	849

1. Bearings are magnetic, altitudes, elevations and heights in feet and distance in NM.  
Straight-in heights are relative to THR elevation, other heights are relative to AD elevation.
- THR 11 N12 30 15.50 W070 01 38.98
  - MAPt D1.2 N12 30 25.75 W070 02 25.55
  - S/D D3.0 N12 30 55.64 W070 04 11.68
  - FAF D6.5 (39,551') N12 31 53.88 W070 07 38.63
  - IF/IAF D12.0 N12 33 24.91 W070 13 02.48
  - ALUKU N12 37 54.84 W070 10 35.21
  - UMARO N12 39 51.07 W070 08 27.25
  - VOGUX N12 25 38.26 W070 12 38.46

CHANGES: editorial